

**NATIONAL ASSOCIATION OF SCHOOLS OF THEATRE**

**Procedures for the Self-Study Document: *Format B***

**Membership Procedures  
September 2016 Edition**

**Applicable for Visits:  
2016-2017 through 2024-2025**

## National Office

### NATIONAL ASSOCIATION OF SCHOOLS OF THEATRE

11250 Roger Bacon Drive, Suite 21  
Reston, Virginia 20190-5248

Telephone: 703-437-0700

Facsimile: 703-437-6312

E-mail: [info@arts-accredit.org](mailto:info@arts-accredit.org)  
or use [staff directory](#)

Web Site: <http://nast.arts-accredit.org>

**Please note: The *Procedures for the Self-Study Document: Format B* title is shortened and simply referred to as *Format B* throughout the NAST Membership Procedures documents.**

---

In addition to the NAST *Procedures for the Self-Study Document – Format B*, the following are necessary to apply for accredited institutional Membership: (1) NAST *Procedures for Institutions*; (2) *Instructions for Preparing Curricular Tables in the NAST Format*; and (3) the latest edition of the NAST *Handbook*, including any current addenda. These texts are available on the NAST Web site.

Information contained herein concerning programs, procedures, requirements, standards, and fees is subject to change without notice by the appropriate body of NAST.

Permission is hereby granted to copy this document for use in the accreditation process.

# NAST Procedures for the Self-Study Document: *Format B*

## TABLE OF CONTENTS

<b>About <i>Format B</i></b> .....	v
Eligibility for <i>Format B</i>	
Structure for <i>Format B</i>	
Several considerations among many regarding <i>Format B</i>	
<b>Additional Formats</b> .....	vi
<b>About This Document</b> .....	vi
<b>General Instructions—<i>Format B</i></b> .....	vii
A. Functions .....	vii
B. Time Frame.....	vii
C. Essential Documents.....	vii
D. Important Considerations .....	viii
E. Self-Study Text Specifications .....	ix
F. Binding and Sending Instructions.....	x
G. Special Instructions for Postsecondary Institutions that Operate Community Education Programs in Theatre.....	xi
H. Optional Supplemental Questions .....	xi
I. Aids to Self-Study .....	xi
J. <i>Handbook</i> Order and Self-Study Format Order .....	xii
<b>Text Outline—<i>Format B</i></b> .....	1
Title Page.....	1
Title Page Specifications.....	2
Table of Contents.....	3
Tabs .....	3
Preface.....	3
<b>Content Outline</b> .....	4
<b>SECTION I. OPERATIONS ANALYSES AND PROJECTIONS</b> .....	4
<b>SECTION II. INSTRUCTIONAL PROGRAMS PORTFOLIO</b> .....	6
A. Certain Curriculum Categories – Introductory Information.....	7
Certain Curriculum Categories – Text Outline.....	7
<i>Items regarding credit and time requirements, professional baccalaureate, theatre             education, and graduate degrees</i>	

**NAST Procedures for the Self-Study Document: *Format B***  
**TABLE OF CONTENTS (*continued*)**

---

B. Specific Curricula – Introductory Information .....	9
Specific Curricula – Text Outline.....	10
<i>Items regarding each curricular program</i>	
C. Programmatic Areas – Introductory Information .....	13
Programmatic Areas – Text Outline .....	13
<i>Items regarding theatre studies in general education, performance, and other programmatic activities</i>	
<b>SECTION III. SUMMARY .....</b>	<b>15</b>
<b>SECTION IV. MANAGEMENT DOCUMENTS PORTFOLIO (MDP).....</b>	<b>16</b>
<b>MDP I—Purposes and Operations .....</b>	<b>17</b>
A. Purposes.....	17
B. Size and Scope and C. Finances .....	17
C. Finances .....	17
D. Governance and Administration.....	18
E. Faculty and Staff.....	19
F. Facilities, Equipment, Technology, Health, and Safety .....	20
G. Library and Learning Resources .....	20
H. Recruitment, Admission-Retention, Record Keeping, Advisement, and Student Complaints	21
I. Published Materials and Web Sites .....	21
J. Community Involvement.....	22
K. Articulation with Other Institutions.....	22
L. Non-Degree-Granting Programs for the Community .....	22
M. Operational Standards for Free-Standing Theatre Institutions of Higher Education .....	22
N. Operational Standards and Procedures for Proprietary Institutions .....	23
O. Branch Campuses and External Programs .....	23
<b>MDP II—Instructional Programs .....</b>	<b>24</b>
A. Credit and Time Requirements.....	24
B. Evaluation of the Development of Competencies .....	24
C. Distance Learning Programs .....	24
D. Teacher Preparation (Theatre Education) Programs .....	25
E. Graduate Programs .....	25
F. Theatre Studies in General Education .....	25
<b>MDP III—Evaluation, Planning, and Projections .....</b>	<b>26</b>
<b>SECTION V. APPENDICES.....</b>	<b>27</b>
<b>Information Required On Site .....</b>	<b>27</b>

## Procedures for the Self-Study Document: *Format B*

### About *Format B*

**PLEASE NOTE:** *Format B* is the successor to *Format B* in the 2008 *Membership Procedures*.

#### **A. Eligibility for *Format B***

- Institutions applying for NAST Membership after Associate Membership.
- Institutions applying for renewal of Membership.
- Institutions applying for Membership for the first time, with the advice and consent of the NAST Executive Director.

#### **B. Structure for *Format B***

1. This format poses a set of related planning questions about the operational aspects of the theatre unit as addressed by NAST standards, followed by a descriptive evaluation of each curricular program and projections regarding its future.
2. It concludes with a summary section on challenges, opportunities, and prioritization of work for improvement in operational and curricular areas.
3. In sections dealing with theatre unit operations and/or projections and futures, it seeks evaluative essays rather than answers to specific questions.

#### **C. Several considerations among many regarding *Format B***

1. *Format B* may be appropriate if the theatre unit:
  - a. Seeks to document fulfillment of NAST standards but wishes to focus most on the strategic issues and opportunities facing the unit as a whole;
  - b. Wishes to consider in some depth the relationships among various program elements such as purposes, size and scope, finances, faculty, facilities and equipment, etc., using NAST standards as a reference point;
  - c. Plans to use the Self-Study as a futures or strategic planning document in contexts other than NAST review; or
  - d. Seeks to update a Self-Study text written in *Format B* of the 2008 *NAST Membership Procedures*.
2. *Format B* is probably not appropriate if the theatre unit:
  - a. Wishes to focus the Self-Study on specific curricular areas or programs more than on the theatre unit as a whole;
  - b. Wants to conduct the NAST review primarily in terms of standards compliance; or
  - c. Would be challenged to allocate administrative and faculty time necessary for the organizational, analytical, and writing requirements of the format.

## **Additional Formats**

If you are interested in additional options regarding Self-Study formats, see “[Selecting a Self-Study Format](#)” on the NAST Web site.

## **About This Document**

This set of procedures is comprehensive, as *Format B* is intended for use by a broad range of sizes and types of institutions. Only those sections and procedures applicable to your specific institution should be used. “N/A” may be used in sections that do not apply.

## **General Instructions—Format B**

### **A. Functions**

1. For institutions, the self-study process should be creative, tailored to local needs and conditions, forthright, and illuminating. The resulting Self-Study document should explore possibilities, provide baselines for future efforts, and support aspirations and improvement. Both the self-study process and the resulting document should focus on how well the theatre unit and the institution develop the knowledge and skills of students.
2. For NAST, the Self-Study document presents the theatre program and addresses its present and future, all with respect to Standards and Guidelines that appear in the *NAST Handbook*.
3. For the institution and NAST, the Self-Study document describes and evaluates the extent to which the various parts of the theatre unit work separately and together, not just as an operational system, but in terms of artistic, intellectual, and educational achievement.

### **B. Time Frame**

The Self-Study is usually based on the last completed academic year, with additional information provided for significant developments since the close of that year.

### **C. Essential Documents**

1. [The Standards portion of the current NAST Handbook and any current addendum, including appendices, if applicable to the institution.](#) The *Handbook* (and addenda, when applicable) can be downloaded from the “NAST Handbook” section of the NAST Web site. NAST standards are found only in the current *Handbook*. It is essential to use a current *Handbook* as a reference point when developing the NAST Self-Study document.
2. [NAST Procedures for Institutions](#), especially the sections regarding Self-Study. This text can be downloaded from the “Procedures for Comprehensive Reviews” section of the NAST Web site.
3. [Procedures for the Self-Study Document: Format B](#). This text can be downloaded from the “Procedures for Comprehensive Reviews” section of the NAST Web site.
4. [Instructions for Preparing Curricular Tables in the NAST Format](#). This text can be downloaded from the “Procedures for Comprehensive Reviews” section of the NAST Web site.
5. “Special Instructions for Institutions that Operate Community Education Programs in Theatre.” These instructions are essential if institutions offer such programs. See page B-xi of this document.
6. [NAST Sourcebook for Futures Planning – Supplement IV: Creating Your Self-Study](#). This planning document is strongly recommended for Self-Study coordinators and writers. This text can be downloaded from the “Assessment and Policy Studies” subsection within “Publications” on the NAST Web site.

## **D. Important Considerations**

### **1. Existing Institutional Materials**

- a. Copies of HEADS Data Surveys are required in the *Management Documents Portfolio* (Section IV). One year of data is required for first-time applicants, three previous years of data for institutions applying for reaccreditation.
- b. Member institutions may wish to update all or part of their previous Self-Study document. Information in each section of the Self-Study outline that follows indicates how this may be done.
- c. The *Management Documents Portfolio* (Section IV of *Format B*) requires many existing institutional texts and publications. Copies of extant planning documents may be included here or in separate Appendices.

### **2. Cross-Referencing**

- a. Cross-referencing among various sections and texts of the Self-Study document is encouraged, especially to avoid redundancy.
- b. All cross-references must be clearly indicated and easy to locate by page and item number.

### **3. Writing Responsibilities and Timing**

- a. It is the institution's prerogative to assign writing responsibilities and to establish a schedule for writing the Self-Study.
- b. Different approaches are appropriate for different institutions. For example, a single writer may produce drafts that faculty, administrators, and others use for evaluation, planning, and developing projections that in turn become the basis for completing the text. In other situations, one or more writing committees may be appropriate. There are many variations between these two extremes.
- c. Many institutions will find it useful to compile the *Management Documents Portfolio* (Section IV) first so that materials in it will be readily available and can be referenced during the self-study process and as other parts of the Self-Study are written. The same may be true of the *Instructional Programs Portfolio* (Section II).

### **4. Attributes and Style**

- a. Determine the scope and depth of the review and the ways results are presented in this format. Choose an appropriate level of detail consistent with your self-study purposes.
- b. Clear, succinct, well-referenced texts are preferred. Given NAST requirements and your goals and objectives for the Self-Study, make texts as direct as possible. Especially problematic are descriptions without evaluations, information dumping, or public relations rhetoric. Length in and of itself is not an indication of rigor or thoroughness.
- c. Avoid duplication of materials or text. It is not necessary to document an issue in the Self-Study narrative if reference to a specific text elsewhere in the Self-Study will accomplish the same purpose. References must be easy for readers to locate; they may be abstracted from other documents and included following the narrative of an item, or referenced by



page and item number to documents provided in the *Management Documents Portfolio* (Section IV), Appendices, or other parts of the Self-Study.

- d. Provide information regarding specific or unique conditions or ways of doing or wording things at your institution. Outside reviewers need such orientation and guidance.
- e. When addressing NAST standards, remember that they describe functions rather than methods. Explanations and references to appropriate preexisting documents need to show how the institution fulfills the function required by the Standard. For example, when writing about or documenting student work and achievement, emphasize the knowledge and skills that are being learned.

## E. Self-Study Text Specifications

1. **Title page.** Specific title page instructions are provided below in Text Outline – Format B. This section contains title page specifications on page B-2.
2. **Table of Contents.** Indicate the page on which each major section of the Self-Study begins, including each heading, subheading, and Appendix. If an outline is used that varies significantly from the NAST *Format B* Outline, an index must be provided that correlates information to the NAST *Format B* Outline. This is especially important for institutions preparing Self-Studies for joint evaluations. Users need to be able to locate information.
3. **Content.** Place your texts in the *Format B* outline that follows or a recognizable version thereof. All theatre curricula offered by the institution must be addressed, including a curricular chart and discussion of each curricular program's compliance with applicable standards.
4. **Tabs.** Separate major sections and appendices with a tab.
5. **Consistency.** Use identical terms for degree and program titles on the title page, throughout the Self-Study, and in curricular tables. Degree titles must be consistent with and reflect degree content.
6. **Page Numbering.** Number each page of all documents consecutively, especially the main body of the Self-Study text. It is not necessary to renumber catalogs or other bound published documents.
7. **Citations.** Referenced documents must be cited by page number(s), and any applicable section(s) or paragraph(s). This applies to all references to institutional publications, whether required by NAST standards or otherwise provided by the institution. Alternatively, it is also appropriate to provide copies of cited paragraphs or pages with the source indicated immediately with or following the response to an item or the discussion of an issue.
8. **Form.** For the Self-Study and other material submitted in hard copy, standard 8½ x 11-inch paper, punched to fit in a standard three-ring (i.e., center of holes should measure 1¼, 5½, and 9¾ inches from the bottom of the page). Please include any hard copy supporting materials (e.g., handbook, promotional materials), including oversized or undersized items in a separate re-closable envelope labeled with the institution's name and the envelope's general contents. Any/all supplemental materials may be submitted electronically. Such information must be organized in clear fashion for easy access.

## F. Binding and Sending Instructions

### 1. National Office Copies

- a. **Number.** Three (3) copies.
- b. **Due Date.** At least four (4) weeks before the NAST visit.
- c. **Content.** Each of the NAST National Office copies of the Self-Study (see requirements for Sections I – IV) must include all applicable appendices, along with a copy of all applicable institutional catalogs, supportive documentation, and the institution’s NAST application form.
- d. **Binding**
  - (1) Each copy of the completed, punched Self-Study sent to the National Office should be unbound and held together in a manner that secures all pages, such as by inserting a round-head paper fastener through the center punched hole.
  - (2) Please do not send the Self-Study document to the NAST National Office in three-ring notebook binders, sheathed in plastic sheet protectors, or stapled.
- e. **Application Fee.** Institutions applying for the first time must enclose the application fee. Existing members will be invoiced during the month of August immediately prior to the academic year of scheduled review.
- f. **Send to:**

**National Association of Schools of Theatre**  
**11250 Roger Bacon Drive, Suite 21**  
**Reston, VA 20190-5248**

### 2. Visitors’ Copies

- a. **Number.** One (1) copy for each visitor.
- b. **Due Date.** At least four (4) weeks before the NAST visit.
- c. **Content.** Each of the NAST visitors’ copies of the Self-Study (see requirements for Sections I – IV) must include all applicable appendices, along with a copy of all applicable institutional catalogs, and supportive documentation. With the exception of the NAST application form, these are identical to those sent to the National Office.
- d. **Binding.** Each of the NAST visitors’ copies of the completed Self-Study should be bound or hole-punched and inserted in a three ring notebook binder or similar packaging.
- e. **Fee.** No fees are to be paid to the visiting evaluators.
- f. **Send to each visitor directly.** Please confirm that each visiting evaluator has received materials sent by the institution.

**Please Note:** Visits may be postponed or canceled by the Executive Director of NAST if adequate materials are not available to the visiting evaluators at least four (4) weeks before the visit.

## G. Special Instructions for Postsecondary Institutions that Operate Community Education Programs in Theatre

Many theatre units or their institutions offer non-degree-granting programs of study for children, youth, and adults in their communities. These range from private lessons with collegiate instructors to large, institutionalized programs with specialized professional faculty and administration. *Community theatre school, preparatory program, laboratory school, and community division* are among the many titles used to designate such programs when they have a specific published identity.

1. If the institution's community education program does not (a) serve individuals in their communities in a pre-professional or avocational context, (b) have a separate published identity, (c) have at least one specifically designated administrator, and (d) operate on an academic year or year-round basis, comment on the program only in Section I.L.: Community Involvement, and Sections III. and IV. as applicable. Do not provide information in Section I.N., Section II., or Section IV-MDP I.L.
2. If the institution's community education program (a) serves individuals in their community in a pre-professional or avocational context, (b) has a separate identity, (c) has at least one specifically designated administrator, and (d) operates on an academic year or year-round basis, provide documents requested in Section IV-MDP I.L. and comment on the program in Section I.N: Non-Degree-Granting Programs for the Community, Section III and other parts of Section IV, as applicable. Do not provide information on your community education program in Section I.L., Section II., or Section IV-MDP I.J.

For further clarification, see *NAST Handbook*, Rules of Practice and Procedure, Part II. Accreditation, Article I. Institutional Membership, Section 3. Curricular Requirements.

For assistance in interpreting these instructions, please call the NAST National Office.

## H. Optional Supplemental Questions

NAST provides optional sets of questions for self-study that can be used to orient any self-study process, format, document, or section in particular ways. For more information, see "Aids to Self-Study" below and available on the NAST Web site. The Association encourages institutions to develop sets of questions that meet their needs for self-evaluation.

## I. Aids to Self-Study

1. The [\*Sourcebook for Futures Planning – Supplement IV: Creating Your Self-Study\*](#) is especially recommended. This text can be downloaded at no charge from the "Assessment and Policy Studies" subsection of "Publications" on the NAST Web site.
2. NAST holds a workshop on self-study at each Annual Meeting.
3. The following documents contain sets of assessment or planning questions and may be useful:
  - *Optional Supplemental Questions for Self-Study;*
  - *Assessment of Undergraduate Programs in Theatre;*
  - *Assessment of Graduate Programs in Theatre;*
  - *Local Assessment of Evaluation and Reward Systems for Arts Faculties in Higher Education;*
  - *NAST Sourcebook for Futures Planning.*

All above titles are available for download or purchase from the NAST Web site; see “Publications,” “[Assessment and Policy Studies](#).”

4. The [Achievement and Quality](#) page located within “Publications” at the NAST Web site has additional resources and sets of questions concerning evaluation of individual and institutional work.

## J. *Handbook* Order and Self-Study Format Order

### Important document organization information for Self-Study writers:

1. When writing the Self-Study document, it is essential to follow the order of the format you have chosen, not the order of the *Handbook*. Applicable portions of the *Handbook* should be used primarily as reference texts to ensure that you are addressing NAST standards and requirements. Each section of each Self-Study format indicates where the principal standards statements for that section can be found. Following the format outline you have chosen will save time, reduce redundancy, and be clearest to visitors and Commissioners.

Standards statements in the NAST *Handbook* begin with the “Basic Criteria for Membership” and follow with general issues of purpose and operations. They then proceed to curricular programs of various levels and types, and continue on to various kinds of institutional and programmatic specializations. The ordering and numbering of these *Handbook* statements reflect their comprehensiveness; the standards address a wide variety of institutions, programs, and possibilities.

Not all *Handbook* statements are applicable to every institution, and thus not all *Handbook* statements will need to be addressed in every Self-Study.

2. For these and other reasons, the ordering and numbering of the standards in the *Handbook* are not the same as the ordering of items in the Self-Study outline for any format, or the outline in any institutional Self-Study. In some instances, there is parallel ordering, but there is never an exact correlation throughout.

Example: As noted above, Standards for Accreditation I. in the *Handbook* presents “Basic Criteria for Membership.” However, if an institution provides all the information requested in any Self-Study format outline, the standards listed as “Basic Criteria” should be addressed automatically. Therefore, to avoid redundancy, no Self-Study format asks for a separate response to the “Basic Criteria”; item I in each Self-Study format addresses another portion of the standards.

3. Consistency of ordering and numbering between the *Handbook* and the Self-Study document is not possible, required, or expected. Please follow the outline order of the format that has been chosen and use it to demonstrate compliance with or fulfillment of published NAST standards applicable to the specific programs of your institution.
4. The content outline for *Format B* follows.

## Text Outline—Format B

### Title Page

- A. Use the title page specifications on page B-2.
- B. The title page presents the definitive list of all theatre programs offered by level, major, and track/concentration/area of emphasis (if designated).
  1. Please ensure that the title of each program is identical on the title page and in the body of the Self-Study, including the curricular table.
  2. Each curricular offering should be listed within a submission category. Please use the following to determine the title page category for each program offered.
    - a. Institutions applying to NAST for the first time:
      - Programs that have been in existence and that have requisite transcript evidence (two transcripts for graduate programs, and three transcripts for all other types of programs) are to be submitted for **Plan Approval and Final Approval for Listing**.
      - Programs in the process of approval by the institution that either have not yet begun enrolling students or have not met the requisite transcript evidence as stated above are to be submitted for **Plan Approval**.
    - b. Accredited Member Institutions:
      - Programs that have previous Final Approval for Listing from NAST are to be submitted for **Renewal of Plan Approval and Final Approval for Listing**.
      - Programs having Plan Approval that do not yet have requisite transcript evidence (two transcripts for graduate programs, and three transcripts for all other types of programs) are to be submitted for **Renewal of Plan Approval**.
      - Programs in existence that have requisite transcript evidence (two transcripts for graduate programs, and three transcripts for all other types of programs) but that have not been reviewed by NAST are to be submitted for **Plan Approval and Final Approval for Listing**.
      - Programs approved by the institution that have not been reviewed by NAST and are not yet enrolling students are to be submitted for **Plan Approval**.
      - Programs approved by the institution that have begun enrolling students, but that have not been reviewed by NAST and do not yet have requisite transcript evidence (two transcripts for graduate programs, and three transcripts for all other types of programs) are to be submitted for **Plan Approval**.
      - Programs having Plan Approval that now have requisite transcript evidence (two transcripts for graduate programs, and three transcripts for all other types of programs) are to be submitted for **Final Approval for Listing**.

# TITLE PAGE SPECIFICATIONS

## National Association of Schools of Theatre

### SELF-STUDY

in [choose one: *Format B* or Custom Format]

Presented for consideration by the  
NAST Commission on Accreditation

by

(NAME OF INSTITUTION)  
(ADDRESS OF INSTITUTION INCLUDING ZIP CODE)  
(TELEPHONE NUMBER INCLUDING AREA CODE)  
(WEB ADDRESS OF THEATRE UNIT)

List by specific title all degrees and/or programs offered.\* Specify fields as applicable. Degrees and/or programs (including all emphases) must be listed under appropriate headings and subheadings as follows. For definitions of “Final Approval for Listing” and “Plan Approval,” see page B-1 of this document.

#### FOR INSTITUTIONS SEEKING MEMBERSHIP FOR THE FIRST TIME

Degrees and/or programs for which Plan Approval and Final Approval for Listing are sought.

Degrees and/or programs for which Plan Approval is sought.

#### FOR INSTITUTIONS WITH MEMBERSHIP OR ASSOCIATE MEMBERSHIP

Degrees and/or programs for which renewal of Plan Approval and Final Approval for Listing is sought.

Degrees and/or programs for which Plan Approval and Final Approval for Listing are sought at the same time.

Degrees and/or programs for which Plan Approval is sought.

Degrees and/or programs for which Final Approval for Listing is sought.

Degrees and/or programs for which renewal of Plan Approval is sought.

The data submitted herewith are certified correct to the best of my knowledge and belief.

\_\_\_\_\_  
(Date)

\_\_\_\_\_  
(Signature of Reporting Officer)

\_\_\_\_\_  
(Name and Title of Reporting Officer)

**\*Degree and/or program listings must be consistent among the institution’s published materials, the title page of the institution’s Self-Study, and the curriculum documentation presented in the body of the Self-Study.**

## **Table of Contents**

A table of contents must be provided corresponding to the principal items in the Self-Study document, including each heading, subheading, and each appendix.

If an outline is used that varies significantly from the NAST *Format B* Outline, an index must also be provided that correlates information to the NAST *Format B* Outline. (This is especially important for institutions preparing Self-Studies for joint evaluations.) Users need to be able to locate information.

## **Tabs**

Separate major sections and appendices with a tab.

## **Preface**

If the institution so wishes, a preface may provide information about context, specific situations within or beyond the institution, specific purposes and goals for the self-study process and for the review, acknowledgements, and so forth. The preface should contain information that will orient the reader to the materials that follow.

## **Content Outline**

### **SECTION I. OPERATIONS ANALYSES AND PROJECTIONS**

*Before proceeding with Section I, please review the following 5 notes:*

- The following “Content Outline” will dictate the structure of a *Format B* Self-Study. The “Outline” provides a general guide regarding section content. As each institution must demonstrate compliance with current standards, the actual standards found in the NAST *Handbook* should be reviewed and addressed in the Self-Study. General *Handbook* references have been provided.
- Not all sections of the *Handbook* apply to all institutions. Institutions are asked to review carefully applicable standards and to address all that apply. As an example, free-standing for-profit theatre institutions of higher education must address standards in Standards for Accreditation XIX. (Specific Operational Standards for Free-Standing Theatre Institutions of Higher Education), and XX. (Specific Operational Standards for Proprietary Institutions of Higher Education); institutions with branch campuses must address standards in Appendix I.A. (Branch Campuses, External Programs).
- The *Handbook* contains Standards, Guidelines, Benchmarks, Norms, Recommendations, and the like. Each institution must demonstrate compliance with all applicable standards in the *Handbook*, which are indicated by words such as “must,” “shall,” “standard,” and/or “essential competency.” Attention to Guidelines, Benchmarks, Norms, and Recommendations is required. Helpful information regarding language use and interpretation may be found in the NAST *Handbook* (Standards and Guidelines for Accredited Institutional Membership, II.). *Handbook* users should be aware of these important distinctions.
- The Self-Study should focus on a narrative descriptive evaluation of the institution’s compliance with applicable standards. The *Management Documents Portfolio* should not include descriptive writing, rather it is intended to hold the institution’s Self-Study documentation.
- If the information necessary to demonstrate compliance with applicable standards is available in documents provided in the *Management Documents Portfolio* (Section IV) or in an Appendix, please reference the location, providing in this section only the introductions or explanations necessary.



**SECTION I. OPERATIONS ANALYSES AND PROJECTIONS (continued)**

**Provide a succinct analytical summary of the status of the following (A through O).**

**In terms of:**

- A. Purposes of the Institution and Unit
- B. Size and Scope
- C. Finances
- Note: Items A, B, and C may be considered separately or together.*
- D. Governance and Administration
- E. Faculty and Staff
- F. Facilities, Equipment, Technology, Health, and Safety
- G. Library and Learning Resources
- H. Recruitment, Admission–Retention, Record Keeping, and Advisement
- I. Credit and Time Requirements
- J. Published Materials and Web Sites
- K. Branch Campuses, External Programs, Use of the Institution’s Name for Educational Activities Operated Apart from the Main Campus or the Primary Educational Program
- L. Community Involvement
- M. Articulation with Other Institutions
- N. Non-Degree-Granting Programs for the Community (*if applicable—see NAST Handbook, Standards for Accreditation III.K.*)
- O. Evaluation, Planning, and Projections

- NAST standards as stated in the *NAST Handbook*, including any concerns about compliance now, or during the projected accreditation period.
- Theatre unit/institutional goals and aspirations for excellence, especially in terms such as artistry, teaching, scholarship, student achievement.
- Strategic issues facing the theatre unit—internal and external challenges and opportunities both theatre and non-theatre over the next 5 – 10 years. Include projections of program and funding stability with regard to operational issues affecting the continuing development of excellence, and the operations requirements for sustaining and improving the quality of student achievement in the programs offered.
- Areas for operational changes and improvements. Include program changes in the early stages of consideration.

**Preparation Notes:**

- ◆ Reference, but do not repeat, information in the Management Documents Portfolio.
- ◆ Indicate “N/A” if K, L, M, or N are not applicable.
- ◆ If your institution has completed an NAST review, it is helpful to note significant changes since the last Self-Study
- ◆ Regarding strategic issues, for sample question sets that may be useful, see “Optional Supplemental Questions for Self-Study” in the “General Instructions” section of this document. These documents are helpful but optional.
- ◆ Regarding Facilities, Equipment, Technology, Health, and Safety, please ensure that Section I and/or Section IV., MDP I.F. give particular attention to the following: adequacy and continuing effectiveness in terms of goals for student learning expectations; size and scope, especially regarding the relationship of specific programs to theatre unit resources; climate control in regard to health and equipment maintenance; technology and/or equipment availability, and capacity to remain current, especially if the theatre unit offers disciplines and specializations that require continuous upgrading; and health and safety information and injury prevention.

## SECTION II. INSTRUCTIONAL PROGRAMS PORTFOLIO

*Before proceeding with Section II, please review the following 7 notes:*

- The following “Content Outline” will dictate the structure of a *Format B* Self-Study. The “Outline” provides a general guide regarding section content. As each institution must demonstrate compliance with current standards, the actual standards found in the NAST *Handbook* should be reviewed and addressed in the Self-Study. General *Handbook* references have been provided.
- Not all sections of the *Handbook* apply to all institutions. Institutions are asked to review carefully applicable standards and to address all that apply. As an example, if an institution does not offer graduate programs, it need not address Standards for Accreditation XII., XIII., XIV., and XV., and appendices applicable to graduate study.
- The *Handbook* contains Standards, Guidelines, Benchmarks, Norms, Recommendations, and the like. Each institution must demonstrate compliance with all applicable standards in the *Handbook*, which are indicated by words such as “must,” “shall,” “standard,” and/or “essential competency.” Attention to Guidelines, Benchmarks, Norms, and Recommendations is required. Helpful information regarding language use and interpretation may be found in the NAST *Handbook* (Standards and Guidelines for Accredited Institutional Membership, II.). *Handbook* users should be aware of these important distinctions.
- To complete a current *Instructional Programs Portfolio*, the following three items are needed:
  - The latest edition of the NAST *Handbook* and all current addenda;
  - NAST *Procedures for the Self-Study Document – Format B* (this document); and
  - Instructions for Preparing Curricular Tables in the NAST Format*.
- Institutions are asked to focus on knowledge, skills, and levels of achievement.

NAST standards outlined in the *Handbook* discuss curricula primarily in terms of student competencies. Effective Self-Studies demonstrate how an institution’s curricula, processes, and evaluation systems ensure the development of these competencies for all students enrolled in a specific program.

Over many decades, certain norms have evolved concerning the time-on-task required to develop competencies expected of students graduating with particular degrees or credentials. These are often summarized as percentages of curricular time. Meeting percentage norms represents a certain benchmark, but it is not a substitute for demonstrating how competencies are developed or how required levels of achievement are being met. Institutions should not equate attention to percentage benchmarks as indicators of the demonstration of compliance with standards.

Competencies may be nurtured and confirmed through or within courses, tutorials, lessons, independent projects, and other forms of artistic and academic work and experience, or by examination. Each competency does not require a separate course. The Commission requires documentation that demonstrates competency development. The major issues include:

- a. What do the NAST standards require?
- b. What does the institution require and expect, particularly in terms of levels of achievement?
- c. What elements of the program are designed to produce each competency?

d. What evaluation mechanisms are in place?

- Institutions are asked to document clearly and concisely levels of proficiency requested in Section II. Examples include course syllabi, examinations or examination requirements, institutional levels of performance proficiency, graduation requirements, etc., or summaries of these. Syllabi are particularly useful if specific content is contained in one or several courses, and that content is not obvious from the course title or catalog description.
- Section II contains three major subsections:

II.A. requests general information about certain particular types of degree programs. Not all types of degree programs are included. For example, undergraduate degrees in theatre with liberal arts structures and content are not addressed in this subsection. Address items in II.A. only if they are applicable to your institution.

II.B. requests information about each and every discrete degree- and non-degree-granting program in theatre. All institutions are required to address II.B. From the NAST review perspective, II.B. contains the most important information in the entire Self-Study.

II.C. requests information about programmatic offerings associated with the instructional program of the theatre unit. Address items in II.C. as applicable to your institution.

### **Section II.A. Certain Curriculum Categories – Introductory Information**

*Before proceeding to the text outlines for Section II.A., please review the following 3 notes:*

- All institutions must address the issue of Credit and Time Requirements in Section II.A. Certain Curriculum Categories – Text Outline below.
- If the institution does not offer programs in any of the categories outlined in II.A. below, please address Credit and Time Requirements, then proceed to Section II.B. Specific Curricula – Introductory Information.
- If the institution offers programs in any of the categories outlined in II.A. below, the institution should provide only the general information requested for that category in Section II.A., and discuss each specific discrete program offered within that category in Section II.B.

### **Section II.A. Certain Curriculum Categories – Text Outline**

**Credit and Time Requirements (refer to NAST *Handbook*, Standards for Accreditation III.A.2., 3., 4., and 6.)**

The Self-Study must include (1) the institution's definition of a semester- or quarter-hour of credit, including calculations for determining credit hours in lecture, studio, ensemble, independent study, and other types of courses and the institution's policies for granting course credit to transfer students at undergraduate and graduate levels, and the location(s) of where this information is published; (2) the procedures the institution uses to make credit hour assignments for courses, programs, and other requirements consistent with its credit hour policies applicable to its offerings; and (3) the means employed by the institution to ensure accurate and reliable application of its credit hour policies and procedures.

**All Professional Baccalaureate Degrees in Theatre—Common Body of Knowledge and Skills (refer to NAST *Handbook, Standards for Accreditation VIII.*)**

*Note: This section applies only if the institution offers one of the following:*

- (a) A Bachelor of Fine Arts degree, or*
- (b) Programs with equivalent professional objectives and content under another title.*

Provide a succinct text that documents the extent to which the theatre unit's overall objectives, practices, and levels of expectation meet NAST Standards for developing the common body of knowledge and skills for all professional undergraduate degree students in the following areas. For each item, describe the level of competency or proficiency required for graduation:

1. Production;
2. Repertory;
3. Theoretical and Historical Studies;
4. Technology; and
5. Synthesis.

**Teacher Preparation (Theatre Education) Programs (refer to NAST *Handbook, Standards for Accreditation X.*)**

*Note: The information should be provided only if the institution offers a complete theatre education curriculum (undergraduate or graduate) that leads to initial certification.*

With regard to all curricula (undergraduate or graduate) that leads to initial certification as a specialist theatre teacher:

1. Describe and evaluate your intern teaching program with specific reference to credit allotment, quality and variety of cooperating schools, process for selecting supervising teachers and sites, and concurrent enrollment other than intern teaching.
2. Describe any special requirements for certification mandated by your state as these affect the teacher training program in theatre education.

**Graduate Programs (refer to NAST *Handbook, Standards for Accreditation XII.*)**

*Note: The information should be provided only if the institution offers graduate degrees theatre.*

1. Provide a list of the titles of graduate theses in all theatre specializations—including theatre education—completed at the institution within the last three years.
2. Describe and evaluate the institution's approaches to the development of breadth of competence for students in all graduate degree programs.
3. Describe and evaluate the institution's approaches to the development of teaching and other professionally-related skills for students in all graduate degree programs.

## Section II.B. Specific Curricula – Introductory Information

*Before proceeding with Section II.B., please review the following 3 notes:*

- Use the following information and address the following numbered questions for each program, major, or distinct emphasis in every:

Non-Degree-Granting instructional program, normally only at the postsecondary level.

Associate Degree curriculum (e.g., Associate of Arts in Theatre; Associate of Arts in Theatre [with an emphasis in Theatre History]; Associate of Arts in Theatre Education; etc.).

Undergraduate curriculum (e.g., Bachelor of Arts in Theatre; Bachelor of Arts in Theatre [with an emphasis in design/technology]; Bachelor of Fine Arts in Acting; Bachelor of Fine Theatre Arts [with an emphasis in Directing]; etc.).

Graduate curriculum (e.g., Master of Arts in Theatre Arts; Master of Fine Arts in Scene Design; Master of Fine Arts in Theatre [with an emphasis in Playwriting]; Doctor of Philosophy in Theatre Education; etc.).

- Determine the application category for each program offered:

Institutions applying to NAST for the first time:

Programs that have been in existence and that have requisite transcript evidence (two transcripts for graduate programs, and three transcripts for all other types of programs) are to be submitted for **Plan Approval and Final Approval for Listing**.

Programs approved by the institution that either have not yet begun enrolling students or have not met the requisite transcript evidence as stated above are to be submitted for **Plan Approval**.

Accredited Member Institutions:

Programs that have previous Final Approval for Listing from NAST are to be submitted for **Renewal of Plan Approval and Final Approval for Listing**.

Programs having Plan Approval that do not yet have requisite transcript evidence (two transcripts for graduate programs, and three transcripts for all other types of programs) are to be submitted for **Renewal of Plan Approval**.

Programs in existence that have requisite transcript evidence (two transcripts for graduate programs, and three transcripts for all other types of programs) but that have not been reviewed by NAST are to be submitted for **Plan Approval and Final Approval for Listing**.

Programs approved by the institution that have not been reviewed by NAST and are not yet enrolling students are to be submitted for **Plan Approval**.

Programs approved by the institution that have begun enrolling students, but that have not been reviewed by NAST and do not yet have requisite transcript evidence (two transcripts for graduate programs, and three transcripts for all other types of programs) are to be submitted for **Plan Approval**.

Programs having Plan Approval that now have requisite transcript evidence (two transcripts for graduate programs, and three transcripts for all other types of programs) are to be submitted for **Final Approval for Listing**.

- Please assist the visitors and Commission members by indicating sections for non-degree-granting programs, associate degrees, baccalaureate degrees, and graduate degrees with tabs if you have more than one of these program types.

**Section II.B. Specific Curricula – Text Outline (refer to NAST *Handbook*, Standards for Accreditation and Appendices regarding curricular programs)**

**Applications for:**

**Renewal of Plan Approval and Final Approval for Listing (*renewal applications only*)**

**Renewal of Plan Approval (*renewal applications only*)**

**Plan Approval and Final Approval for Listing (*first-time applications only*)**

*Address items 1. through 8. inclusive for each distinct curriculum. A “distinct curriculum” is defined as (1) every area of emphasis within each major offered on-site, and (2) every area of emphasis within each major offered via distance learning where at least 40% of the program is offered via distance means.*

*Omit item 4. unless the degree is a graduate program.*

1. The program or degree title, with emphasis if applicable, followed by a statement of purposes as published by the institution; for example, for whom the program or degree is intended, its preparational emphasis, its aspirations for student achievement, etc.

Please ensure that the title used here is identical to the one used on the title page of the Self-Study, and throughout all current or projected institutional documents.

2. A curricular table in the NAST format. Refer to the document titled *Instructions for Preparing Curricular Tables in the NAST Format*.

Please call the NAST National Office for assistance if needed.

Please ensure that the title used in the curricular table is identical to that used on the title page of the Self-Study, and throughout all current or projected institutional documents.

3. An assessment of compliance with NAST standards applicable to the program. Refer to the NAST *Handbook* sections on two-year, undergraduate, graduate, and non-degree-granting programs, and applicable appendices.
  - a. This assessment must address the competencies required by applicable Standards in terms of specific content, expectations for knowledge and skills development, and levels of achievement required for graduation as determined by the institution.
  - b. Required levels of achievement may be documented in many ways, including but not limited to admission criteria, program expectations, course syllabi, graduation regulations, examination guidelines, grade level requirements, and so forth.
  - c. If a program involves *distance learning*, it must be thoroughly analyzed with respect to all NAST standards under that title in the NAST *Handbook*, Standards for Accreditation III.H. Information provided in this section and supported in the Management Documents Portfolio of the Self-Study (MDP II.C.) must include documentation of the processes used to (1) establish that the student who registers in a distance education course or program is the same student who participates in and completes the course or program and receives academic credit; and (2) protect student privacy and notify students of any additional charges associated with the verification of student identity at the time of registration or enrollment.

- d. If the program is explicitly designed as a *multi- or interdisciplinary combination*, and in which the discipline of theatre is either the primary or home discipline or constitutes over 25% of the requirements to complete the program, it must be thoroughly analyzed taking into account specific NAST standards for disciplines in combination. Refer to the NAST *Handbook*, Standards for Accreditation III.I.
  - e. If the program is focused on *electronic media*, it must be thoroughly analyzed taking into account specific NAST Standards in this area. Refer to the NAST *Handbook*, Standards for Accreditation III.J.
4. Institutions offering graduate degrees must include a discussion of the following:  
(If not applicable, please proceed to item 5. below.)
- a. Proficiencies required for entrance to the program (for example, performance, theoretical and research skills, theatre history, etc.); when these must be achieved and how they are tested; and whether credit toward the degree is permitted for study directed toward completion of these proficiencies.
  - b. Research and professional tools required in the program (for example, languages, statistics, computer science, etc.); when these must be achieved and how they are tested; and whether credit toward the degree is permitted for study directed toward completion of these proficiencies.
  - c. The institution's policy for conducting a comprehensive review at or near the conclusion of degree study of (a) initial graduate degree candidates, (b) terminal graduate degree candidates by using such methods as written or oral comprehensive examinations, seminars providing summary evaluation, or a cumulative series of reviews.
  - d. Candidacy and final project requirements for the program; for example, requirements for dissertations, performances, research projects, etc. Discuss the purpose of these requirements and how they serve the objectives of the program.
5. Results of the program related to its purposes, including means for evaluating these results and assuring that requisite student competencies and levels of achievement discussed in items 3. and 4. above are being developed. Means for using such evaluations as the basis for program improvement are considered primarily in Section I.O., and if applicable, may be considered in Section III of *Format B*.
6. An assessment of strengths, areas for improvement, challenges and opportunities, including an assessment of the extent to which the program is meeting institution-wide or theatre unit aspirations for excellence.
7. A rationale for continuation of the program if it has had no graduates during the past five years.
8. Plans for addressing weaknesses and improving results.

**Applications for:**

**Plan Approval (*first-time and renewal applications*)**

*Address items 1., 2. and 3. above. Address item 4. above if a graduate program. Also address the following items:*

9. Indicate the means for assuring that requisite student competencies and levels of achievement will be developed.

SECTION II. INSTRUCTIONAL PROGRAMS PORTFOLIO

10. Identify each member of the current theatre faculty, full-time and part-time, concerned with the new program. If faculty have not been recruited, specify the number of new positions with qualifications and ranks for each.
11. Describe the present and projected fiscal resources relevant to the new curriculum. For example, specify a budgetary commitment that states sources of revenue as well as expenditures for all aspects of the program, including personnel, financial aid for students, physical plant, library, and equipment.
12. Describe available and/or projected facilities relevant to the new curriculum.
13. Provide a description (or listing) of current and/or projected library holdings and learning resources (including electronic access) relevant to the new curriculum.
14. Submit a detailed rationale for the new curriculum including the following points:
  - a. Reasons for adding this program;
  - b. Unique aspects of this program as distinguished from other degrees or options presently offered;
  - c. Number of students expected to be served; and
  - d. Expectations for placement of graduates.
15. Describe the relationship between the new program and ongoing programs with special attention to the effects on existing academic, financial, or physical resources. Note whether the proposed program will replace any existing program(s).

**Applications for:**

**Final Approval for Listing after Plan Approval (*renewal applications only*)**

*Address items 1., 2., 3., 5., 6., and 8. above. Address item 4. above if a graduate program. Also address the following item:*

16. Provide a minimum of three transcripts of graduates for each new non-degree-granting, associate, or baccalaureate program, and a minimum of two transcripts of graduates for each new graduate program. Include a specific designation of the degree conferred (i.e., concentration, major, option), and a coding by number, letter, or color of each course according to the categories of the curricular table previously submitted for Plan Approval (e.g., all studies in the major area marked “C” and so forth). These coded transcripts must be a part of the Self-Study document.

**Applications for:**

**Concurrent Plan Approval and Final Approval for Listing (*renewal applications only*)**

*Address items 1. through 16. above, except item 6. Address item 4. above if a graduate program.*



### **Section II.C. Programmatic Areas – Introductory Information**

*Before proceeding to the text outlines for Section II.C., please review the following 3 notes:*

- The information requested is intended to complete the composite picture of programmatic offerings and activities. Answers should be summary and brief unless the institution determines otherwise.
- Performance in this section refers to the overall performance program. Please do not repeat information provided elsewhere regarding performance requirements for specific degree programs (primarily Section II.B.) or types of degrees (primarily Section II.A.)
- If the information requested is available in documents provided in the *Management Documents Portfolio* (Section IV) or in an Appendix, please reference the location, providing in this section only the introductions or explanations necessary.

### **Section II.C. Programmatic Areas – Text Outline (refer to NAST *Handbook*, Standards for Accreditation III.O. and Appendix II.A.)**

#### **Theatre Studies in General Education**

*Theatre units have important responsibilities for the development of knowledge and skills in theatre among the general population. The most immediate of these responsibilities in multipurpose postsecondary institutions is with non-major students. However, attention to theatre studies in general education extends into many other aspects of professional education and training. It is expected that each theatre unit will have specific objectives, policies, and programs to address this area. This portion of the Self-Study should assess the appropriateness and the effectiveness of these objectives, policies, and programs.*

Briefly describe objectives, policies, and programs concerning theatre studies in general education. As applicable, the statement should address such issues as:

1. The general college student;
2. Preparation of the theatre professional;
3. Faculty and administrative involvement;
4. The local community;
5. The media; and
6. Arts and arts education policy development.

## **Performance**

*Note: This portion of the portfolio should present the theatre unit's general philosophy and specific objectives for its performance program. Relationships among the objectives of the theatre unit, the scope and objectives of curricular programs, and resources for performance should be evident.*

Briefly describe:

1. The theatre unit's goals and objectives for performance and the administrative, curricular, programmatic, qualitative, and evaluative approaches used to achieve these goals and objectives;
2. Policies and procedures regarding student performance, faculty performance, touring practices, and access to other professional and student performances, both on- and off-campus.

## **Other Programmatic Activities**

*This portion of the Self-Study should discuss any programmatic activities related to the instructional program that have not already been covered. These include but are not limited to instructional, performance, research and policy-development activities.*

Briefly describe any goals, objectives, and activities of the theatre unit involving educational or research institutes, festivals, special service activities, policy studies, or special liaisons with other institutions or organizations, etc.

**SECTION III. SUMMARY (refer to NAST *Handbook, Standards for Accreditation II.L.*)**

***Before proceeding, please review the following note:***

- If the information necessary to demonstrate compliance with applicable standards is available in documents provided in one or more items of the *Management Documents Portfolio* (Section IV) or in an Appendix, please reference the location, providing in this section only the introductions or explanations necessary.

Based on the results of your self-study, particularly Sections I, II, and IV, provide a succinct analysis of each of the following for the theatre unit as a whole, indicating whether or not items are in priority order:

1. Strengths
2. Opportunities
3. Challenges
4. Major areas for improvement, with an indication of urgency for each
5. Overall plans for addressing or completing improvements and for working with challenges and opportunities

## SECTION IV. MANAGEMENT DOCUMENTS PORTFOLIO (MDP)

*Before proceeding, please review the following 10 notes:*

- NAST reviews are based significantly on information provided in Sections I., II., and III. of the Self-Study plus information provided in Section IV., the Management Documents Portfolio. As applicable, institutions may provide additional information in Section V. Appendices. When all sections are compiled in one document, material in each of the four or five sections must produce aggregate documentation of compliance with all standards applicable to the institution no matter how the Self-Study is structured by the institution. Various sections of the Management Documents Portfolio may serve a number of different functions: provide information specifically requested in the Management Documents Portfolio outline below; present information not provided in Sections I., II., or III.; provide documentation regarding issues addressed or referenced previously in the Self-Study; and so forth.
- This portfolio provides a set of reference material. It presents documents, publications, collected data, and resources used by the theatre unit. Normally, it requires compilation of existing documents, not new writing. These documents include institutional catalogs or portions thereof, HEADS Data Surveys, Web site resources, standard statements or policy documents, plans, and so forth. Documents may be referenced but should not be duplicated or submitted multiple times.
- The order of the *Management Documents Portfolio* (Section IV) tracks the order of previous Sections I, II, and III.
- To save time, if the institution has previously prepared an NAST Self-Study, please locate and review either a previous *Management Documents Portfolio* or similar sections of a previous Self-Study, and update it to produce the items requested. Compare the information requested below to previous responses to ensure that your documents address current content requirements.
- To complete a current *Management Documents Portfolio*, the following are needed:
  1. The latest edition of the NAST *Handbook* and all current addenda; and
  2. NAST *Procedures for the Self-Study Document: Format A* (this document).
- With the exception of institutional catalogs, please provide only those portions of larger documents that apply to the theatre unit.
- Excerpts from Web sites and information providing citations of Web sites must be clear and accurate. Citations must be easy to find.
- In previous sections of the Self-Study, as appropriate, refer to items in the *Management Documents Portfolio*.
- The information provided in Section IV must be included in the table of contents that precedes the main text of the Self-Study, or have its own table of contents, or be tabbed, or otherwise be formatted for easy reference.
- Electronic copies of documents may be submitted; however, the Self-Study must include a reference to where the materials may be found and how they are labeled. Any URL provided should be in complete address form.

## **MDP I—PURPOSES AND OPERATIONS**

### **A. Purposes**

1. Institutional catalogs (undergraduate, graduate, community education, etc., as applicable). The required catalog(s) may be supplied in one of the following ways: (a) print copy sent in addition to the Self-Study, (b) an electronic version stored on accessible media, or (c) the web address (complete URL) at which the catalog(s) may be accessed. If catalog information does not contain a catalog publication schedule, please provide it. Only one catalog or set of catalogs for each copy of the Self-Study should be provided.
2. Statement of purposes and specific aims—usually, mission, goals, and objectives for the theatre unit, and if applicable, for the entire institution.
3. Definitions of the institution’s terminology for designating wholes and parts of curricula such as: major, minor, concentration, track, emphasis, etc.

### **B. Size and Scope and C. Finances**

HEADS Data Survey(s) containing factual information on enrollment and finances. First-time applicants must provide a completed Data Survey current to the year of self-study. Institutions holding Associate Membership or Membership in NAST applying for renewal of accreditation must provide HEADS Data Surveys for three academic years—the year in which the on-site visit occurs plus those for the previous two years.

### **C. Finances**

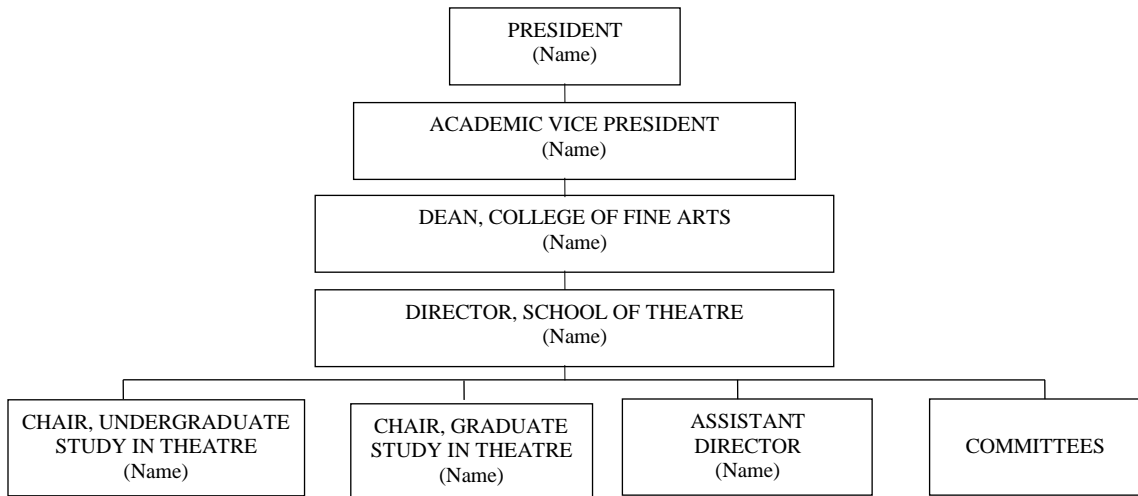
1. Financial statements or data providing a composite picture of theatre unit finances for the past three years. Independent theatre schools of all types must also provide audited financial statements with opinion for the past three years.
2. Proprietary (for profit) institutions must indicate net worth or equity and net income for the past three years. Indicate the distribution to stockholders through the past three years in dollar amounts, percentage of total institutional revenue, and percentage of return on equity or net worth. Provide copies of corporate income tax returns, both state and federal, for the past three years, and a list of officers, employees, and board members who have a significant equity relationship.

**D. Governance and Administration**

1. A table clearly outlining the internal organization of the theatre unit. If applicable, outline the administrative and operational relationships of the theatre unit to the parent institution. Include names as well as titles of individuals.

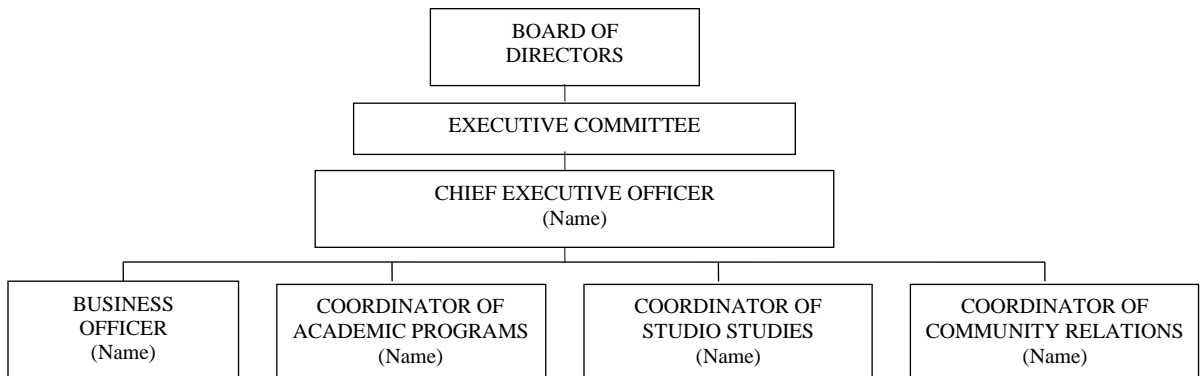
**EXAMPLE 1:**

**Sample Table of Organization  
for Baccalaureate and Graduate Degree-Granting Institutions  
and Community/Junior Colleges**



**EXAMPLE 2:**

**Sample Table of Organization  
for Non-Degree-Granting Institutions**



2. For independent schools of theatre, the table must include a profile of the Board of Directors that includes the names, business affiliations, and lengths of service. The table of organization should also include the Artistic Director, if applicable.
3. Description or outline of the theatre executive's responsibilities and authority including teaching, creative work and research, performing, and community service, as well as administration.
4. Outline the governance and administrative responsibilities and relationships among faculty, staff, and administration.
5. Present policies regarding the term of the chief theatre executive and reviews of the chief theatre executive.
6. Description or outline of communication policies and patterns within the theatre unit.
7. Description or outline of the extent of clerical, professional, and technical support containing the names of staff positions and a brief overview of principal responsibilities.
8. List of programs offered that are jointly administered with other units—for example, theatre education programs, graduate programs, multidisciplinary programs, etc.

#### **E. Faculty and Staff**

1. Policies and procedures: (a) for calculating faculty loads, including credit for the direction of graduate dissertations, projects, productions, etc.; (b) for evaluating teaching effectiveness of theatre faculty; (c) regarding faculty development; (d) regarding the number of technical and support staff.
2. A chart or other format providing the following for each faculty member: (a) name; (b) year hired; (c) rank; (d) tenure status; (e) degrees or credentials earned with institution, majors, and emphases; (f) a short biographical summary – if this information is published in the catalog or on the institution's Web site, please provide a citation here; and (g) if theatre education faculty, Pre-K–12 teaching experience.

Please separate and indicate full-time and part-time faculty.

Curriculum vitae for each full-time and part-time member of the theatre faculty may be included in the institution's *Management Documents Portfolio* for ease of compiling the above information, but a full curriculum vita for each faculty member is not necessary for the final submittal of the Self-Study.

3. A list of current faculty teaching assignments, including, if applicable, the number of classroom/lecture and/or applied lessons per week per semester.
4. Duties performed by graduate assistants.

*Note: Factual information concerning full-time and part-time faculty is provided in the HEADS Data Survey(s) listed earlier in the portfolio (Section IV, MDP-I.B., page B-18). Do not duplicate this information here, but rather reference it as necessary.*

**F. Facilities, Equipment, Technology, Health, and Safety**

1. A list of facilities for theatre and related activities.
2. An inventory of equipment for theatre as required by the institution.
3. Plans and/or schedules for maintenance and replacement of facilities and equipment.
4. Policies and means for informing students and others regarding health and safety issues, hazards, and procedures inherent in studio, performance, and teaching, both in general and as applicable to their specialization, including but not limited to hearing, ventilation, musculoskeletal health, and injury prevention. Please include the text or indicate the Web location of any basic information used by the institution for this purpose.
5. In addition to item 4., with regard to injury prevention, (a) theatre unit policies, protocols, and daily operational expectations and (b) their relationships to (1) promoting the health of theatre professionals, (2) maintaining the fitness and safety of equipment and technology, and (3) addressing health-related issues and conditions present in theatre studios, practice, rehearsal, shop, and performance facilities.
6. As applicable: documentation regarding (a) health and safety certifications or approvals, (b) relationships with health professionals for students and the theatre unit, (c) operational policies establishing clear distinctions between general health information from the theatre unit and professional medical advice.

**G. Library and Learning Resources**

1. A description of theatre library holdings and learning resources, including electronic access, as published by the institution.
2. Information concerning student and faculty access (a) to the institution's library in terms of hours of operation, catalogs and indexes; and (b) to the holdings of other institutions through various means.
3. If the theatre unit relies substantially on libraries or learning resources beyond the institution for information access, collections, or facilities, information concerning (a) accessibility; (b) collections in relationship to major areas of study, curricular offerings and levels; (c) agreements regarding student/faculty use of these facilities; and (d) student use of these facilities.
4. Expenditures for theatre acquisitions as documented by the institution—ideally, a breakdown with expenditures (a) the year before last, (b) last year, and (c) budgeted for this year in the following categories: books, periodicals, audiotapes/recordings, videos and films, scripts, images, microfilm/microfiche, electronic access, and other holdings (specify). Also, a total for each year.
5. Number of staff dedicated to the theatre collection and the qualifications for each position.
6. Policies and procedures for acquisitions, preservation, and replacement, including theatre faculty involvement.
7. Plans for library equipment acquisitions and maintenance.



**H. Recruitment, Admission–Retention, Record Keeping, Advisement, and Student Complaints**

1. Policies, procedures, and theatre unit standards used for recruitment and admissions at each applicable program level (i.e., non-degree-granting, associate, baccalaureate, graduate). The information must provide proficiency expectations for admission to candidacy for the program or the degree.
2. Policies, procedures, and theatre unit standards regarding retention at each applicable program level.
3. Policies and procedures used for the advisement and counseling system at various program levels, including those employed to address (a) program content; (b) program completion; (c) theatre -specific student services associated with individual students' programs.
4. Policies concerning the submission, processing, and consideration of student complaints offered in substantial number over an extended period of time with regard to a specific issue, including communication of the outcome of consideration and any action taken.
5. Information concerning counseling for students (a) preparing to be elementary/secondary specialist theatre teachers, (b) preparing for careers, and (c) anticipating continuation of studies.
6. Student record-keeping policies and procedures at various program levels, including issues such as courses taken, grades, repertory studied, performance, and special evaluations.
7. Policies concerning maintenance of final project documentation for graduate degrees.

**I. Published Materials and Web Sites**

1. The location of published or Web information required by NAST standards regarding content to be included in published materials.

*Note: NAST standards require publication of purposes; size and scope; curricula; faculty; administrators and trustees; locale; facilities; costs and refund policies; rules and regulations for conduct; all quantitative, qualitative, and time requirements for admission, retention, and completion of degrees and other credentials; academic calendar; grievance and appeals process; and accreditation status with NAST and other appropriate accrediting agencies. Members of the Association having degree programs in theatre education and/or theatre therapy shall state in their catalogs the registration, certification, and/or licensure to which their curricula will lead. Costs; qualitative, quantitative and time requirements; and academic calendars shall have an appropriate relationship to purposes, curriculum, and subject matters taught.*

*Through means consistent with its purposes and resources, (a) the institution or (b) the theatre program (either separately or in conjunction with the institution) shall routinely provide reliable data and information to the public concerning the achievement of its purposes.*

2. Documents or Web locations applicable to the theatre unit that provide public information about the program, including promotional material used in student recruitment.

*Note: Institutions preparing for on-site visits should provide (a) a sample of published material used for student recruitment in the Management Documents Portfolio, and (b) a complete set of published material and procedures for student recruitment to NAST visitors on-site.*

**J. Community Involvement**

1. Lists of the most significant community involvements/interactions.
2. Documentation of formal relationships and policies when community involvement is related to a postsecondary degree offering.

*Note: Do not duplicate information requested in item L. below.*

**K. Articulation with Other Institutions**

*Note: Include only if applicable.*

1. Published lists or texts of articulation agreements between two-year and four-year degree-granting institutions.
2. Copies of any agreements whereby the institution either provides or receives credit for degrees or other credentials in theatre from other institutions.

**L. Non-Degree-Granting Programs for the Community**

*Note: Include only if the institution offers a non-degree-granting community education program submitted for Basic Listing which meets the four eligibility criteria in the NAST Handbook, Standards for Accreditation III.K.)*

1. Catalogs and any promotional material including title(s) of program(s).
2. Purposes (mission, goals, and objectives) of any formal community education program in theatre operated by the school.
3. Overviews or summaries of enrollment, faculty, facilities, and equipment.
4. Policies regarding student and program evaluation.
5. Requirements for any certificates or diplomas offered.
6. Any planning documents associated with the program(s).

**M. Operational Standards for Free-Standing Theatre Institutions of Higher Education**

*Note: Include only if applicable.*

1. Documentation of charter and/or formal authority of incorporation and state recognition and/or licensure documents authorizing the institution to operate.
2. A list of board members and other management personnel, and the official document defining duties and responsibilities of individuals in, and the operations of, the governance and administration system(s), and board conflict of interest policies.
3. Any existing teach-out agreements and procedures.

**N. Operational Standards and Procedures for Proprietary Institutions**

*Note: Include only if applicable.*

1. Documentation of charter and/or formal authority of incorporation and state recognition and/or licensure documents authorizing the institution to operate.
2. The official document defining duties and responsibilities of individuals in, and the operations of, the governance and administrative system(s), including a list of all such individuals and their titles.

**O. Branch Campuses and External Programs**

*Note: Include only if applicable.*

1. Policies and procedures indicating how the institution maintains direct and sole responsibility for the academic and artistic qualities of all aspects of all programs.
2. Policies, procedures, and results associated with the provision of adequate resources, including instructional delivery systems.
3. Catalogs and other relevant documents not already submitted for the main campus.

## MDP II—INSTRUCTIONAL PROGRAMS

### A. Credit and Time Requirements

The information provided in items 1. through 6. below needs to document how the institution's policies and practices are in compliance with the NAST *Handbook*, Standards for Accreditation III.A. "Credit and Time Requirements." Free-standing theatre institutions need to complete item 8. to document compliance with the NAST *Handbook*, Standards for Accreditation XIX.1.H. "Publication of Articulation Agreements."

1. The institution's definition of a semester- or quarter-hour of credit, including calculations for determining credit hours in lecture, studio, independent study, and other types of courses.
2. The institution's policies concerning granting course credit to transfer students at undergraduate and graduate levels.
3. Institutional publication of (a) credit definitions and methods and (b) transfer of credit policies.
4. The procedures the institution uses to make credit hour assignments for courses, programs, and other requirements consistent with its credit hour policies applicable to its offerings.
5. The means employed by the institution to ensure accurate and reliable application of its credit hour policies and procedures.
6. If the theatre unit uses new or experimental or atypical formats or methods for delivering instruction and awarding credit, information demonstrating that they are logical, fair, and consistent in applying fundamental principles that base credit awarded on verifiable relationships among instructional and study time, achievement, and lengths of courses and programs.
7. Documentation that credit-hour and transfer policies are published.
8. For free-standing institutions, information demonstrating that the theatre unit makes readily available to enrolled and prospective students a list of any institutions with which the institution has established an articulation agreement.

### B. Evaluation of the Development of Competencies

Student evaluation policies and procedures such as juries, senior comprehensive examinations, the screening process for admission to upper division or degree candidacy, etc.

### C. Distance Learning Programs

1. The institution's written policies, rules, and procedures and other general information about distance learning programs.
2. If not automatically contained in information provided in item C.1., documentation of the processes used to:
  - a. Establish that the student who registers in a distance education course or program is the same student who participates in and completes the course or program and receives academic credit. Verification methods may include, but are not limited to, secure login and passwords protocols, proctored examinations, and new or other technological identification practices.

- b. Protect student privacy and notify students of any additional charges associated with the verification of student identity at the time of registration or enrollment.

**D. Teacher Preparation (Theatre Education) Programs**

*Note: This item refers to all curricula (undergraduate or graduate) that lead to initial certification as a specialist theatre teacher.*

1. Information concerning the intern teaching program with specific reference to credit allotment, and the process for selecting supervising teachers and sites.
2. Any special requirements for certification mandated by your state as these affect the teacher training program in theatre education.

**E. Graduate Programs**

1. Rules concerning the curricular percentage or number of credits in courses intended for graduate students only that are required for each graduate degree program.
2. Rules concerning independent study applicable to graduate degrees in theatre.

**F. Theatre Studies in General Education**

1. A list of all theatre courses offered specifically for students not majoring in theatre, with figures or other descriptive information that provide a picture of overall enrollment patterns.
2. The institution's practices for assigning teachers to general studies courses in theatre.
3. The institution's policies with respect to enrollment of non-majors in (a) studio instruction, (b) performing groups, and (c) courses intended primarily for theatre majors.

**MDP III—EVALUATION, PLANNING, AND PROJECTIONS**

*Note: Please do not provide previous NAST Self-Study documents.*

- A. Any planning documents currently in effect or in use**
- B. Unit evaluation schedules and protocols**
- C. Any current analytical or projective studies concerning the theatre unit**

## SECTION V. APPENDICES

### All Institutions:

Appendices include any additional information the institution wishes to provide or reference. These should be labeled alphabetically (Appendix A., B., C., etc.). Each must be tabbed for easy reference.

### Free-Standing Institutions:

Provide a Self-Study Appendix demonstrating compliance with all NAST Standards found in Standards for Accreditation XIX. of the NAST *Handbook* entitled “Specific Operational Standards for Free-Standing Theatre Institutions of Higher Education.”

### Proprietary Institutions:

Provide a Self-Study Appendix demonstrating compliance with all NAST Standards found in Standards for Accreditation XX. of the NAST *Handbook* entitled “Specific Operational Standards and Procedures for Proprietary Schools.”

**This concludes the Content Outline for *Format B*.**

### Information Required On Site (*in addition to examples of student work*)

#### Transcripts

1. Paper or electronic access to transcripts or copies thereof for graduates from each undergraduate or graduate degree or postsecondary non-degree-granting program for the past three years must be available to the visiting evaluators.

If a program has had no graduates in the past three years, transcript access for the past five years must be provided.

Transcripts or copies must be arranged or clearly identified by program title.

Visitors must be able to select and review at random from among all or a selection of transcripts from each degree or postsecondary non-degree-granting program offered. Ideally, two or three transcripts for each program are chosen and considered by the visitors.

If the institution requires that permission be granted by each graduate for the review of transcripts, this must be accomplished prior to the visit.

Section 438(b)(1)(G) of the Family Educational Rights and Privacy Act of 1974 stipulates that institutions may release without threat of loss of federal funding, student records to “accrediting organizations in order to carry out their accrediting functions.”

The institution should provide on-site assistance to the visitors in comparing transcripts with NAST standards and the institution’s program requirements.

*Note for Current Member Institutions Only:*

Member institutions requesting in the Self-Study (a) Final Approval for Listing (FAL) for one or more programs that currently hold Plan Approval (PA) and are listed in italics by NAST or (b) Plan Approval and Final Approval For Listing (PA/FAL) for one or more programs that have not been previously reviewed by NAST, must do the following:

Provide as requested in Section II.B.16 of Format B two transcripts for each graduate program, and/or three transcripts for each program in any other category. The Commission cannot take action on requests for Final Approval for Listing unless it reviews the requisite number of transcripts in person.

For such programs, separate on-site review of transcripts beyond those contained in the Self-Study is not required.

Member institutions submitting continuing programs listed in regular type by NAST for renewal of Final Approval for Listing, and in all other categories except FAL and PA/FAL mentioned above, should not provide transcripts for those programs with the Self-Study.

**Faculty**

2. Copies of the institution's published policies concerning appointment, compensation, tenure, increases in salary, promotions, and fringe benefits for full-time and part-time faculty.
3. A set of full-time theatre faculty résumés in alphabetical order. A set of part-time theatre faculty résumés in alphabetical order.

**Recruitment, Admission-Retention, Record Keeping, Advisement, and Student Complaints**

4. If applicable, copies of examinations developed by the institution used for graduate entrance and placement for students entering (a) initial graduate programs and/or (b) terminal graduate programs.

**Published Materials and Web Sites**

5. Provide copies of all promotional materials and procedural documents used in the student recruitment process, including copies of advertisements.
6. Access to the institutional or theatre unit Web site.